



Region Communications Inc.  
128 S. East Street, Box 505  
Crown Point, IN 46307

PRSR STD  
ECRWSS  
U.S. POSTAGE  
PAID  
Crown Point, IN  
PERMIT No. 811

POSTAL CUSTOMER

# Winfield American

Vol. 23, Issue 1,120

Serving Winfield, Lakes of the Four Seasons, and Winfield Township since 2002

March 22, 2024

## Career scholarship account program now accepting applications to connect employers to Indiana students

The State of Indiana is now accepting applications for Career Scholarship Account (CSA) programs and providers. The first-in-the-nation CSA program provides \$5,000 annually for tenth- through twelfth-grade students enrolled in eligible work-based learning programs.

“By partnering with our schools and investing in our future workforce, employers are helping to support students as they explore, engage and experience a variety of career options,” said Dr. Katie Jenner, Indiana Secretary of

Education. “Indiana’s CSA program provides an incredible opportunity to help students overcome barriers, and ultimately, increase access to quality work-based learning experiences across the state, as well as credentials of value before high school graduation.”

Eligible work-based learning experiences provide ongoing interactions between high school students and professionals in workplace settings that foster in-depth, firsthand experiences in a career field of interest. Employers, schools, unions

and non-profit intermediaries are encouraged to apply as a provider. Eligible CSA programs must be:

- Employer-driven,
- Culminate in credentials of value,
- Include work-based learning,
- Support high school graduation requirements, and
- Be aligned to career and college.

“Employers and intermediaries play a vital role in introducing students to in-demand careers in Indiana,” said Indiana Commissioner for Higher Education Chris

Lowery. “The CSA program allows Hoosier students to gain valuable hands-on experience in a career field of interest and discover opportunities for education and training beyond high school.”

Through a cross-agency coordinated effort, the Indiana Department of Education approves eligible programs, the Indiana Commission for Higher Education approves eligible providers, and the Treasurer of State approves eligible students and provider expense reimbursements. CSA program funds cover eligible

expenses in the following categories:

- Expenses to enroll in and attend courses, sequences, apprenticeships, or programs of study
- Career coaching and navigation services
- Postsecondary education and training
- Transportation and equipment
- Certification and credentialing examinations

Providers are encouraged to apply by the priority deadline of Friday, April 5. Provider applications received after the priority

deadline will be accepted and approved on a rolling basis until Friday, September 6, for the 2024-25 school year. Applications received after Friday, September 6, will be considered for the following school year. Student applications for the CSA program will open this spring.

For additional information and to apply to be a CSA provider, visit [www.in.gov/tos/csa/provider-resources](http://www.in.gov/tos/csa/provider-resources).

For questions regarding CSA Providers and for CSA announcements, visit [www.in.gov/tos/csa/](http://www.in.gov/tos/csa/) or contact [CSA@doe.in.gov](mailto:CSA@doe.in.gov).

## Indiana launches \$29M Legend Fund to support entrepreneurs, small businesses access capital

The Indiana Economic Development Corporation (IEDC) recently announced the launch of the state’s Legend Fund, a loan participation program designed to help entrepreneurs and small businesses gain access to funds needed to grow. The Legend Fund, fueled by federal funding awarded to Indiana through the State Small Business Credit Initiative (SSBCI), will distribute \$29 million to mission-driven local lenders to increase lending to Hoosier small businesses, with an added focus on those that

have been historically underserved.

“Indiana is leading the nation in providing the ideal environment to help small businesses start, grow and innovate,” said Secretary of Commerce David Rosenberg. “With even more funding and new programs like the Legend Fund, we’re taking our support of the entrepreneurial ecosystem even further, ensuring all small businesses have equitable access to the tools, resources and capital needed to succeed.”

The Legend Fund will

support Indiana entrepreneurs and small businesses by giving lenders an incentive to provide operating capital to Hoosier-based businesses. Through the program, mission-oriented and non-traditional lenders that provide debt capital for qualified purposes to Indiana-based small businesses are eligible to have a portion of those loans purchased by the IEDC, enabling lenders to then support even more entrepreneurs and small businesses. The program’s \$29 million is expected to yield a minimum \$50 million impact

on Indiana’s entrepreneurial ecosystem.

*Small businesses: Connect with lenders to access funds needed to grow*

Indiana entrepreneurs and small businesses are encouraged to connect with approved lenders by visiting the Community Reinvestment Fund, USA Connect Platform. The new platform – which is also accessible via ConnectIND, a digital portal and statewide listing of resources for entrepreneurs and founders – allows small businesses to view and match with participating

lenders based on a business’ operating capital needs and a lender’s mission, focus areas and loan offerings.

The Legend Fund has already approved nine lenders through the program, meaning these organizations are ready to help Indiana entrepreneurs and founders today. These lenders include organizations such as Build Fund, Business Ownership Initiative Inc. (BOI), Cambridge Capital Management Corp., Community Investment Fund of Indiana, Flagship Enterprise Capital, Lendistry, Lynx

Capital, Indiana Community Business Credit Corporation, and One Southern Indiana.

Additionally, entrepreneurs and small businesses will be able to access technical assistance at no cost to get support preparing for and accessing capital through the Legend Fund as well as through other SSBCI-supported initiatives, such as seed and pre-seed funding rounds through Elevate Ventures. The IEDC is currently soliciting proposals from technical assistance providers and expects to be

(See *Indiana* Pg. 8)

## NIPSCO, NiSource contribute over \$2.4 Million to community organizations

NIPSCO recently released its 2023 Corporate Citizenship Report, highlighting a successful year of employee giving and volunteerism across northern Indiana. The report, available at [www.NIPSCO.com/GivesBack](http://www.NIPSCO.com/GivesBack), highlights how NIPSCO and the NiSource Charitable Foundation donated over \$2.4 million to more than 250 non-profit organizations. In addition, NIPSCO employees volunteered more than 2,700 service hours to local organizations.

The NiSource Charitable Foundation was established by NIPSCO’s parent company NiSource. The foundation’s goal is to create strong and sustainable communities where customers and employ-

ees live and work. The foundation provides funding and encourages employee volunteerism to support national non-profit organizations.

In 2023, focused grants and donations to local chari-

ties and Diversity, Equity and Inclusion initiatives.

Donations and grants are contributions from NIPSCO, its shareholders, the NiSource Charitable Foundation and direct employee contribu-

tions to deserving organizations and causes. One of my favorite annual events is joining more than 100 walkers on the NIPSCO team at the American Heart Association’s Heart Walk because these causes matter to us. I’m proud of our team members who continuously contribute to making a positive difference year after year.”

Below are a few of NIPSCO’s successful giving programs in 2023.

### Employee Giving Programs

NIPSCO employees volunteered service hours to organizations across northern Indiana in September 2023. This volunteerism is part of NIPSCO’s Charity of Choice program, a company-wide

effort focused on giving back to non-profit organizations. Last year, NIPSCO employees volunteered 800 service hours during the Charity of Choice program to local organizations such as the Boys & Girls Club of Fort Wayne, Challenger Learning Center of Northwest Indiana, Humane Indiana and Food Bank of Northwest Indiana, Inc.

During the holiday season, NIPSCO hosts its annual Hope for the Holidays Campaign, where employees and NIPSCO’s shareholders donate their time and resources to families and organizations in need. In its 11th year, more than \$150,000 was donated to organizations throughout northern Indiana such as

Blessings in a Backpack of Fort Wayne, Make a Kid Smile of Northwest Indiana and the Salvation Army of Northwest Indiana. In addition, NIPSCO ran an employee-driven toy drive and donated more than 1,000 toys to eight Toys for Tots organizations across the NIPSCO service area.

### Targeted Grants

For the past eight years, NIPSCO has helped fund environmental projects and programs through its Environmental Action Grant. To date, NIPSCO has helped 124 projects come to fruition across northern Indiana. The 15 projects funded in 2023 by the NiSource Charitable Foundation provided funds to

(See *NIPSCO* Pg. 2)



table organizations were centered on areas of identified need, including Basic Needs and Hardship Assistance, Economic and Workforce Development, Environmental Stewardship, Public Safety and STEM (Science, Technology, Engineering, Math) Energy Education

tions. Customer energy rates are not used for donations or grants.

“At NIPSCO, serving our communities is at the forefront of everything we do,” said Mike Hooper, NIPSCO president. “Our employees care about our communities and donate their time and re-

[www.winfieldamerican.com](http://www.winfieldamerican.com)



# INDOT, ISP encourage drivers to plan ahead for upcoming solar eclipse

Indiana will play a pivotal role in hosting eclipse enthusiasts as they flock to the Hoosier State to catch a glimpse of the first total solar eclipse in seven years on Monday, April 8. The eclipse will be visible over a large portion of the state, with the path of totality spanning from Evansville to the outskirts of Fort Wayne, entering southwest Indiana at 3:01 p.m. EDT/2:01 p.m. CDT and exiting to the northeast at 3:12 p.m. EDT/2:12 p.m. CDT.

Other parts of the state will experience a partial eclipse of at least 90% totality from approximately 1:30 p.m. EDT/12:30 p.m. CDT to 4:30 EDT/3:30 CDT.

Nearly 4 million Hoosiers live within the path of totality, with hundreds of thousands of people expected to visit Indiana for the event. Increased traffic and congestion are also expected as residents and tourists alike make their way to viewing destinations. Areas near the eclipse centerline are anticipated to see the greatest influx of visitors, including Vincennes, Bloomington, Franklin, and Bluffton. Indianapolis and Evansville are also included in the path.

To ensure a smooth trip, the Indiana Department of Transportation (INDOT) and Indiana State Police (ISP) urge drivers to plan ahead and prepare for potential travel impacts before, during and after the eclipse.

**Before the eclipse**

- Research your viewing site, considering accessibility, parking and crowd size.

Check INDOT TrafficWise on the mobile app or at 511in.org to plan your route and monitor traffic conditions. Plan to arrive to your destination early.

- Anticipate increased traffic and congestion, especially in areas in or near the path of totality.
- Reach your destination safely -- buckle up and put your phone down while driving.
- Pack plenty of snacks and water, as well as charging cables for electronics and mobile devices, in the event you or your group become stranded.
- Make sure your vehicle has a full tank of gas and top off fluids before you head out in case you're stuck in traffic for a long period of time. Use this eclipse-ready checklist for more road trip essentials.

**During the eclipse**

- Avoid travel during the eclipse or in the main path if possible.
- Exit the roadway to stop and view the solar eclipse. Do not stop along highways or park on the shoulder for viewing.
- Do not take photos or videos while driving. Indiana is a hands-free state. Holding mobile devices such as smartphones or tablets while driving is prohibited by state law.
- Do not wear eclipse glasses while driving.
- Turn on your headlights.

Do not rely on automatic lights.

- Watch for pedestrians, especially along secondary roads.

**After the eclipse**

- Plan your post-event transportation method well in advance. If celebrating, ensure everyone has a safe and sober way to return home. Designate a sober driver or arrange for alternate transportation.
- Exercise patience when leaving your viewing location as traffic may be heavy. Follow instructions from law enforcement or emergency personnel and be considerate of fellow drivers.
- Stay put and stick around to avoid the post-event rush.
- Clean up after yourself and dispose of trash in designated receptacles, or take it with you.

- Once again, check INDOT TrafficWise on the mobile app or at 511in.org to plan your route and monitor traffic conditions.
- INDOT will limit road closures and restrictions where possible on state routes to help with traffic flow surrounding the eclipse. View current construction and maintenance activities on INDOT's TrafficWise map or the free mobile app.

Visit the sites below and follow INDOT and ISP on social media for more information regarding the total solar eclipse in Indiana.

www.eclipse2024.in.gov  
www.visitindiana.com/eclipse2024  
www.greatamericaneclipse.com/indiana-2024-eclipse  
www.science.nasa.gov

(NIPSCO from Pg. 1)

projects focused on Monarch butterflies, habitat restoration, youth outdoor nature education and sustainability programming. Many funded projects and programs included a significant volunteer and community engagement component, encouraging community members to give back through environmental stewardship projects.

In its sixth year, NIPSCO's Public Safety Education and Training Action Grant provided funding to 16 local non-profit organizations and first responders with their public safety education and training across northern Indiana. Some of the projects included distribution of carbon monoxide detectors to residents, carbon monoxide educational training and lithium-ion bat-

tery response training.

**Catalyst Projects**

In 2023, NIPSCO and the NiSource Charitable Foundation provided funding for projects focused on creating strong and sustainable communities in northern Indiana. Some of these projects included developing handicap-accessible mobile resource centers, building a soup kitchen and supporting educational camps.

**Impactful Partnerships with the NiSource Charitable Foundation**

Last year, NIPSCO and the NiSource Charitable Foundation partnered with several organizations across northern Indiana to support their short-term projects and provide multi-year funding for innovative programs and projects that are experimen-

tal in nature. This partnership allows organizations to have the bandwidth to create, test and measure the success of their program or project, building a business case toward sustainable funding. Some of the projects and programs include building a home for a family in need, supporting STEM education through a summer camp and developing activities for youth mentor programming immersed in nature.

To view the report and learn more about NIPSCO's tradition of charitable giving, visit [www.NIPSCO.COM/GivesBack](http://www.NIPSCO.COM/GivesBack).

Northern Indiana Public Service Company LLC (NIPSCO), with headquarters in Merrillville, Indiana, has proudly served the energy needs of northern Indiana

for more than 100 years. As Indiana's largest natural gas distribution company and the second-largest electric distribution company, NIPSCO serves approximately 859,000 natural gas and 483,000 electric customers across 32 counties. NIPSCO is part of NiSource's (NYSE: NI) six

regulated utility companies. NiSource is one of the largest fully regulated utility companies in the United States, serving approximately 3.7 million natural gas and electric customers through its local Columbia Gas and NIPSCO brands. More information about NIPSCO

and NiSource is available at [www.NIPSCO.com](http://www.NIPSCO.com) and [www.NiSource.com](http://www.NiSource.com).

## LOFS Lions Club awarding five scholarships

The LOFS Lions are awarding five \$1,000 scholarships to graduating high school seniors from Winfield Township, West Porter Township, or Lakes of Four Seasons. Deadline for applications is April 30, 2024.

The three required documents (Essay, High School Transcript and College Acceptance Letter) can be sent to Lion Juan or Yolanda Hernandez, Chairpersons, or e-mailed to [yher2001@yahoo.com](mailto:yher2001@yahoo.com) with the subject line of LOFS Lions Scholarship.

Information can also be found on LOFS Lions Facebook page, or by e-mailing: [yher2001@yahoo.com](mailto:yher2001@yahoo.com).

**DOWN TO EARTH TREE SERVICE**

**663-5630**

Out on a limb for you since 1992

**Firewood/ Snowplowing**



## Individual Tax Preparation Federal & State

# \$125.00

(includes one state) \*  
Additional fee for each non-residential state (Winfield and Lakes of the Four Seasons Only)  
\$250 value

- Personalized tax service
- Convenient consultation in your home
- Pick up/Delivery service to your home
- \$15 Senior citizen discount (Age 64+)
- Broad background in tax preparation

Call to arrange appointment:  
**(219) 718-7751**

**D. Jeffery Keiser, CPA**  
Registered Certified Public Accountant with the IRS

LOFS resident - 30+ years  
\*Additional fees may apply for  
Sole proprietors & Supplemental Income and Loss Schedules

## WE DON'T JUST WORK ON CARS, WE FIX THEM!

# Crown Point Auto

## Repair & Restoration

219-663-1847  
1510 North Main Street

Crown Point Auto

# 10% OFF ALL SERVICES

Must present coupon. Most vehicles, some restrictions apply. Expires 4/22/24



Checked your belts lately?

Have an Extended Warranty? Bring it to us!

24-hour Drop-off Nationwide Warranty Price Match Guarantee

Hours: Mon. - Fri. 8 a.m. - 5:30 p.m.  Find us on: facebook

[www.crownpointautorepair.com](http://www.crownpointautorepair.com)



Get an ASE Certified Professional to do the work for you!

## GOT HEAT?

### FREE Diagnosis

Let CPAR Diagnose your heat problem at no charge and get **10% off** any necessary repairs.

Must present coupon. Most vehicles, some restrictions apply. See store for details. Expires 4/22/24

Winfield American

---

## POT HOLE PATROL

**FREE** Inspection and Evaluation on your Vehicle with Repair from any damage done.

**PLUS 10% OFF** any repair needed

Must Present Coupon. Most Vehicles, some restrictions apply. See Store for Details. Expires 4/22/24

Winfield American

---

## FREE

Emission/Check Engine Light Diagnosis

 Up to 1 hour (w/repairs)

Must present coupon. Most Vehicles, some restrictions apply. See Store for Details. Expires 4/22/24

Winfield American





# WINFIELD WOODS Chiropractic

*Your journey to wellness begins here.*

**GET YOUR BODY  
COMPOSITION TEST TODAY!**

Now offering Inbody 770 scans.  
Mention this ad and  
get 10% OFF your first scan!

**Dr. Aaron K. Popp**  
Chiropractic Physician and Nutritionist

**Dr. Jeremy K. Popp**  
Chiropractic Physician and Acupuncturist

*Most insurances accepted*



## Winfield Woods Medical Complex

Phone: 219-661-9161	9150 East 109th Avenue, Suite 2C
Office Hours: Monday through Friday	Crown Point, IN 46307
8:00 AM - 7:00 PM	<a href="http://www.winfieldchiro.com">www.winfieldchiro.com</a>

**Across the street from Lakes of the Four Seasons**



# HOW ARE YOU SLEEPING?



If you or someone you know **SNORES** nightly and has one or more of the following symptoms, it's best to see a doctor.

- REPEATED SNORING INTERRUPTED BY PERIODS OF SILENCE
- FALLING ASLEEP WHEN YOU SHOULDN'T AT WORK, WHILE DRIVING, ETC.
- RESTLESS SLEEP
- MORNING HEADACHES
- IRRITABILITY
- DEPRESSION
- LOSS OF ENERGY, FATIGUE
- TROUBLE CONCENTRATING
- FORGETFULNESS
- SEXUAL DYSFUNCTION

(These Are All Symptoms Of A Treatable Sleep Disorder Known As Sleep Apnea.)

Board Certified Sleep Physicians Emilio D. Soria, MD  
Brent A. Jacobus II, MD  
Sleep Center of Northwest Indiana  
Accredited by A.A.S.M.

**NOW OPEN**  
*In Winfield Woods Medical*  
9150 E. 109th Ave., Suite A1 • Crown Point, IN 46307  
Call: 219-940-9052  
[www.sleepcenternwi.net](http://www.sleepcenternwi.net)

# Winfield Family Dental

Serving the Community for Over 30 Years

- Implant Dentistry
- Sedation Dentistry
- Cosmetic Dentistry
- Family Dentistry
- Emergency Dentistry
- New Extended Hours

FREE CONSULTATIONS • FREE SECOND OPINIONS



Dr. Eric Compton, Dr. Vivienne Zhang, Dr. Elias Macis

Voted "Best in the Region" 10 Years in a Row!

Call Today!! (219) 661-5085



**New location in the Winfield Woods Building**  
9150 East 109th Ave. Ste. 3B  
Crown Point, IN 46307  
(Directly Across from LOFS Entrance)

# URGENT CARE



PINNACLE HOSPITAL  
a physician owned facility



(219) 756-2100



9301 CONNECTICUT  
DR. CROWN POINT,  
IN 46307

NEW HOURS

Monday-Saturday  
11AM-7PM  
Closed Sunday

WAIT MINUTES, NOT HOURS!





# Community Healthcare System unveils new name: Powers Health

Following two decades of dedicated service under the name Community Healthcare System, a new chapter begins July 1, 2024, with the introduction of Powers Health. This new name marks a strategic evolution, uniting the brand under one clear and distinct identity. While the name changes, the system's commitment to exceptional, compassionate care remains steadfast.

## Not a Merger, but a Unifying Step

Especially in healthcare, a name change can cause concern. Powers Health is an evolution of Community Healthcare System, not a merger or acquisition. It is a deliberate step toward presenting our organization as an integrated system of care — offering seamless and comprehensive services across all facilities.

“We will continue to invest resources throughout Northwest Indiana by building new facilities and expanding services,” said Donald P. Fesko, CEO of Community Foundation of Northwest Indiana, Inc., parent company of Community Healthcare System. “With the support of some of the area’s most talented medical professionals, we are proud to have earned numerous national accreditations and distinguished recognitions for high-quality care and innovative technology.”

## Vision and Expertise: Recognizing the Legacy of Donald S. Powers

The new name honors the impactful legacy of Donald S. Powers, a visionary community leader who, along with four land developers, donated five acres and his own funds to help build

the flagship Community Hospital that serves as an anchor of the community. His tireless efforts laid the foundation for the strong integrated system.

He was one of the original Directors and President of Community Foundation of Northwest Indiana, Inc. in 2001, parent company of Community Healthcare System.

Powers was dedicated to bringing advanced healthcare services to Northwest Indiana. When his wife was diagnosed with cancer, they had to travel hundreds of miles away from home to receive the higher-level care she needed. He vowed to build a healthcare system so that other families in the area would be able to access specialty care and treatment close to home.

As a Navy fighter pilot, he was proud to fight for our country and community. Known as a decisive, humble leader, he donated his time and resources to numerous charitable organizations.

With numerous healthcare systems — including some in Indiana — also using Community in their names, the name Powers Health establishes a distinct identity, reflecting itself as a leader in advancing healthcare.

## Continued Medical Leadership

Powers Health is an integrated system where primary care physicians offer easy access to specialty and advanced care in Northwest Indiana. A few highlights:

- Cancer: Patient-centered, highly advanced breast and lung programs, low-dose CT scans and dedicated nurse navigators.

- Heart: Northwest Indiana’s most comprehensive heart programs, offering advanced treatments such as transcatheter aortic valve replacement (TAVR) and endovascular aneurysm repair.
- Neuroscience: The full-service program offers a range of specialists in advanced neurological disorders.
- Orthopedics: Total hip and knee replacements, advanced techniques for shoulder surgery and Joint Commission-certified advanced spine surgery.
- Rehabilitation: Extensive subspecialty care, along with advanced diagnostic capabilities for physical therapy, occupational therapy and imaging.
- Stroke: The area’s only Joint Commission-Certified Comprehensive Stroke Center and freestanding inpatient rehabilitation center. The Benefits of Powers Health Integrating as One System of Care Here is what patients, employees and other stakeholders can expect to see:
- Unified identity: Powers Health oversees the system’s expertise and patient-centered care approach.

- Shared excellence: Don Powers’ vision lives on, unifying talented medical professionals for better patient outcomes and employee opportunities.
- Sustained reputation: Powers Health will continue to provide high-level care to our patients.

## The Hospital Names Remain the Same

The names of the acute care hospitals, Community Hospital, St. Catherine


Hospital and St. Mary Medical Center, will not change. They will work together to provide care under Powers Health. The care delivery site names that will change should offer more clarity and consistency across the system. These include:

- Community Stroke & Rehabilitation Center name changes to Powers Health Rehabilitation Center.
- All location-based or hospital-based health center names

change to Powers Health Outpatient Center.

- Community Care Network, Inc. name changes to Powers Health Medical Group.


Powers Health understands that change can raise questions. Our system is committed to transparent communication and will actively engage with employees, patients and the community throughout this transition. Please visit [www.COMHS.org/PowersHealth](http://www.COMHS.org/PowersHealth) to learn more and for answers to frequently asked questions.



**Fred M. Ulayyet**  
Licensed Insurance Agent  
Proud To Be Local Since 1987  
[www.SCIS.us](http://www.SCIS.us)  
[info@scis.us](mailto:info@scis.us)

## Turning 65 or older?

**BEST IN MEDICARE SUPPLEMENT**

 **SENIOR CARE INSURANCE SERVICES**

- Medicare Supplement Plans
- Medicare Part D • Prescription Drug Plans
- Medicare Disability Plans
- Medicare Advantage Plans

**219-736-7800 • 1-800-821-0604**

**CROWN POINT • 10841 Broadway**  
(Near Strack & Van Til)

<b>MUNSTER</b> 8213 Calumet Avenue (Near Chipotle)	<b>MERRILLVILLE</b> 7998 Broadway (Near Walter E. Smithe Furniture)
<b>SCHERERVILLE</b> 1505 U.S. Hwy. 41 (Near Strack & Van Til)	<b>VALPARAISO</b> 2505 LaPorte Avenue (Next to Five Guys)

**Since 1983**

**TOM & ED'S** Autobody Inc.  
& Towing

**24-Hour Towing (800)358-0122**  
[www.TomAndEdsAutobody.com](http://www.TomAndEdsAutobody.com)

**WE CAN FIX ANYTHING!**

- FREE RENTALS ON SITE
- CLAIM ASSISTANCE
- INSURANCE DIRECT REPAIR
- WRITTEN LIFETIME WARRANTY

**THE BEST IN NORTHWEST INDIANA & THE INDUSTRY!**

<b>Crown Point</b> 10730 Broadway 219-661-8877	<b>Schererville</b> 1225 Birch Drive 219-322-5220	<b>Merrillville</b> 8130 Taney Place 219-736-0722
--	---	---

## This week in history

**March 24, 1989**

The supertanker Exxon Valdez, owned and operated by the Exxon Corporation, ran aground on a reef in southern Alaska.


An estimated 11 million gallons of oil spilled into the water. Attempts to contain the massive spill were unsuccessful, and wind and currents spread the oil more than 100 miles from its source, eventually polluting more than 700 miles of coastline.

It was later revealed that Joseph Hazelwood, the captain of the Valdez, was drinking at the time of the accident and allowed an uncertified officer to steer the massive vessel. In March 1990, Hazelwood was convicted of misdemeanor negligence, fined \$50,000, and ordered to perform 1,000 hours of community service. In July 1992, an Alaska court overturned Hazelwood's conviction, citing a federal statute that grants freedom from prosecution to those who report an oil spill.


Exxon itself was condemned by the National Transportation Safety Board and in early 1991 agreed under pressure from environmental groups to pay a penalty of \$100 million and provide \$1 billion over a 10-year period for the cost of the cleanup. However, later in the year, both Alaska and Exxon rejected the agreement, and in October, 1991, the oil giant settled the matter by paying \$25 million, less than 4 percent of the cleanup aid promised by Exxon earlier that year.

[www.history.com](http://www.history.com)

**DIRECTOR PROFILE: ANTHONY GEISEN**



- 6th Generation from the Geisen family to serve funeral families
- Recent graduate from Worsham School of Mortuary Science
- 2017 Purdue University graduate
- Enjoys coaching football in the Crown Point community



**CROWN POINT | 663-2500**  
**MERRILLVILLE | 769-3322**  
**HEBRON | 996-2821**  
**MICHIGAN CITY | 874-4214**  
[GEISENFUNERALHOME.COM](http://GEISENFUNERALHOME.COM)



Read to enjoy and explore!

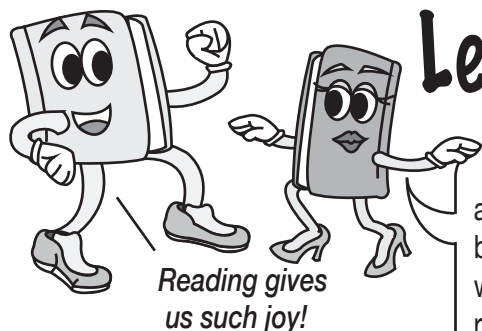
Read to learn and understand!

Kids: color stuff in!

# Newspaper Fun!

www.readingclubfun.com

Animills LLC © 2021 V17-14

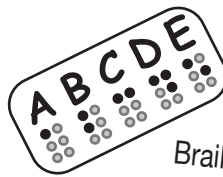


Reading gives us such joy!

Read the clues about reading to fill in the crossword puzzle:

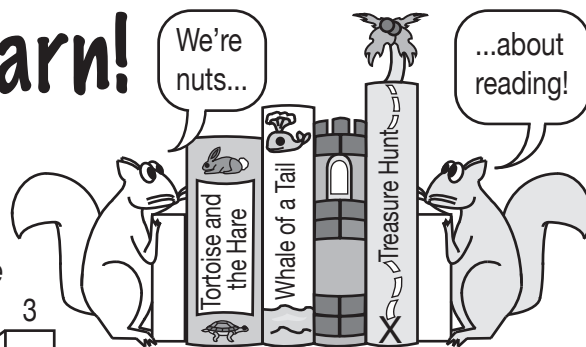
- 1.) We read using the letters of the \_\_\_\_\_.
- 2.) When we read \_\_\_\_\_ we are able to share stories.
- 3.) We read for fun and to \_\_\_\_\_.
- 4.) We read signs by seeing the words or \_\_\_\_\_.
- 5.) We read words, \_\_\_\_\_ and paragraphs.
- 6.) We read using our \_\_\_\_\_.
- 7.) Some people, who cannot see well or are blind, may read using \_\_\_\_\_, a system of raised dots.
- 8.) We learn new words and \_\_\_\_\_ when we read.
- 9.) We read from the left side to the \_\_\_\_\_.
- 10.) We can read about places we can \_\_\_\_\_ to and places we might not.
- 11.) We read music by reading the \_\_\_\_\_.
- 12.) People who are deaf may read finger \_\_\_\_\_, or hand signals as well as the printed word!

We read using our eyes. We use the alphabet. People who cannot see well or are blind can read Braille, a system of raised dots, with their fingers. People who are deaf may read lips or fingers spelling out hand signals, in addition to the printed word.



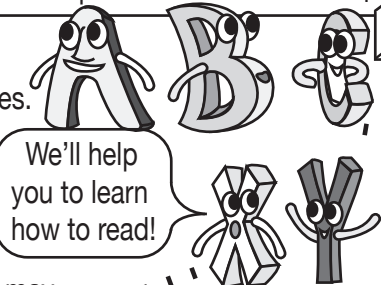
Braille

alphabet



We're nuts...

...about reading!



We'll help you to learn how to read!

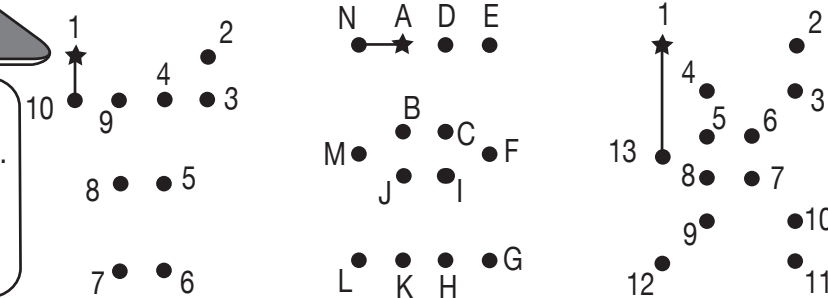
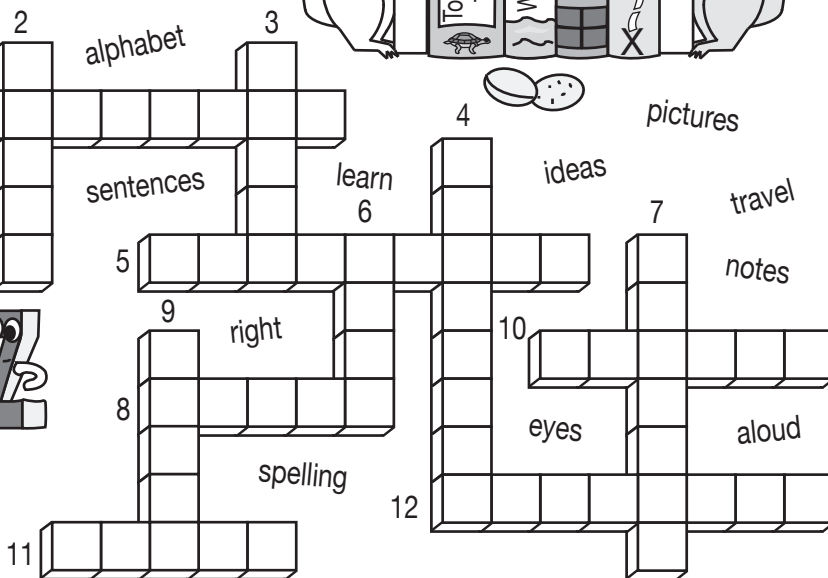
We enjoy reading on our new tablet.



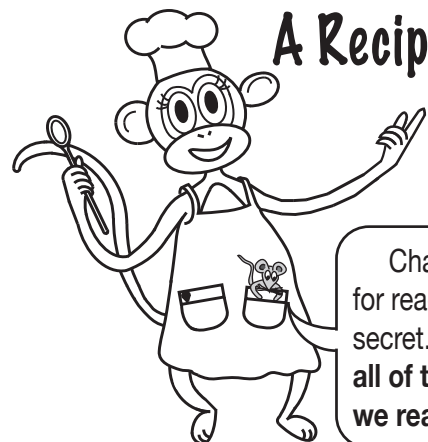
There are 3 letters in my puzzle. Connect dots in the first one by following the numbers. Then, follow the alphabet in the middle one. Finally, connect the numbered dots of the last letter to see the word we use the most.

## What Word Do We Use the Most?

Do you know what word is used the most in written materials?



## A Recipe for Reading!



Chatter's recipe for reading is not a secret. **Find and circle all of these items that we read every day:**

### We Read:

- |          |         |                 |
|----------|---------|-----------------|
| recipes  | labels  | announcements   |
| poetry   | maps    | bulletin boards |
| symbols  | charts  | invitations     |
| signs    | flyers  | directions      |
| notices  | letters | newspapers      |
| websites | books   | magazines       |
| articles | diaries | instructions    |
| comics   | plays   | scrapbooks      |

Read for fun!

Read to learn!

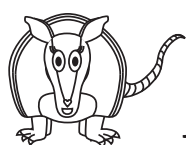
I love puzzles!



## Read Right! Read Left!

We read English words and sentences from left to right. The languages of Arabic and Hebrew are read from right to left.

Here are some fun English words that can be read in both directions and still have meaning for us. **Study the words and fill in the vowels that make sense:**



CAN YOU READ FROM LEFT TO RIGHT?

?TFEL OT THGIR MORF DAER UOY NAC

1. k \_ \_ p = p \_ \_ k

2. st \_ p = p \_ ts

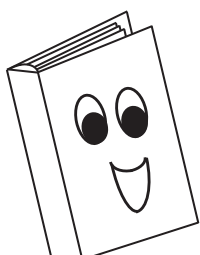
3. p \_ ls = sl \_ p

4. t \_ p = p \_ t

5. st \_ r = r \_ ts

6. l \_ v \_ = \_ v \_ l

I love to read!



Books!

7. n \_ w = w \_ n

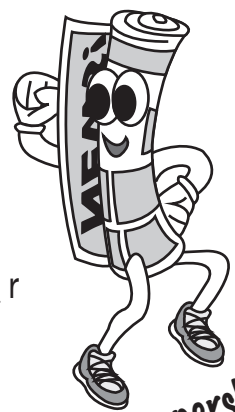
8. n \_ t = t \_ n

9. s \_ w = w \_ s

10. r \_ \_ d = d \_ \_ r

11. b \_ t = t \_ b

12. m \_ \_ d = d \_ \_ m



Newspapers!



# Can you save too much for a rainy day?

“Save for a rainy day” is an old piece of advice — and a good one. But is it possible to save too much?

To begin with, what defines a “rainy day” in terms of financial needs? It could be any number of things: a temporary loss of employment, a major home or car repair, a large medical bill, and so on.

If you did not have the money readily available to pay for these types of expenses, you might be forced to dip into your IRA, 401(k) or other retirement accounts, incurring taxes and possible penalties, as well as lowering the amount of money you’d have available for retirement. And that’s why it’s a good idea to build an emergency fund containing up to six months’ worth of total expenses, with the money kept in a liquid, low-risk account

that’s separate from the accounts you use for your daily spending needs.

An emergency fund is valuable, but many people may be overfunding it. And while this isn’t the biggest financial mistake one can make, it could result in some missed opportunities.

For one thing, when you keep money in a low-risk account, you can generally count on your principal being protected, which means the money will be there for you when you need it —but the flip side is that this money likely won’t grow very much, if at all. And if you’re going to achieve your long-term goals, such as a comfortable retirement, you need your investment portfolio to provide you with significant growth potential within the context of your individual risk tolerance. So, any excess dollars

kept in your rainy-day fund might be used to help fuel some growth-oriented investments.

You could also use these dollars to help diversify your investment portfolio. If you only owned one type of investment, your portfolio could take a big hit if a market downturn affected just that asset class. But by owning a mix of stocks, bonds, government securities and other investments, you can help reduce the impact of market volatility. (Keep in mind, though, that diversification, by itself, can’t protect against all losses.)

Still, before deciding on what to do with extra money you might have in your emergency fund, how will you know if you indeed have too much? Up to six months’ worth of total expenses may be adequate for most people — but everyone’s life is different. For example, if you have reason to believe your employment — or that of your spouse — may be

in jeopardy in the near future, or if you anticipate the need for some renovations to your home, but not for a year or so, you might want more than six months of expenses tucked away in your emergency fund. Also, once you’re retired, you may well want to keep a year’s worth of expenses in the fund. If you need cash, you don’t want to be forced to sell investments when their price may be down, especially since you have less time for them to recover.

Ultimately, when thinking about how much to keep in your emergency fund, review your situation carefully and weigh as many variables as you can. And if you do decide your rainy-day fund is abundant, use any “overflow” in a way that can help you keep moving toward your financial goals.

*This content was provided by Edward Jones for use by Pat Hedge, your Edward Jones financial advisor at 10618 Randolph Street, Winfield, IN. 219-662-5999. Member SIPC*

# The Family Folklore Foundation’s Project: 1933 World’s Fair-Y Tales

Family Folklore Foundation, Inc. announced that they can accomplish their goals via the Indiana Arts Commission, the National Endowment for the Arts, and South Shore Arts. Their 501C3 non-profit educational organization’s mission is to educate people of all ages about the global village via field excursions and media projects, then in turn sharing our learning with the greater public.

Their volunteer participants enhance their social skills, critical thinking skills, problem solving skills, writing skills, media production skills, and dramatic expression. In short, they’ve learned to be better communicators as they become more self-realized.

Their current project, “The 1933 World’s Fair-y Tales”, will have a positive effect on the community of Northwest Indiana as well as their virtual friends. They’ll celebrate the 90th Anniversary of the 1933 Chicago World’s Fair and the movement of the Century of Progress buildings to the shores of the Indiana Dunes National Park in Beverly Shores, Indiana.

They will present our live radio play “If Houses Could Talk” to hundreds of people at the Indiana University Northwest Main Stage Theater in the new Fine Arts Building on Friday, April 19 at 11 a.m. The cost is \$3 for students and \$5 for non-students.

There will be colorful visuals from the fair, a scenario of the five houses crossing the lake in a barge pushed by Josephine the Tugboat, and a puppet show of dune flora and fauna. (Cash only.) This show is wonderful for World’s Fair buffs, and students since it includes achievement concepts of language arts, state, country, and world study standards.

The experiences will appear in their book, “Family Folklore Musings: The 1933 Chicago World’s Fair-y Tales” (\$10) and on [www.canva.com](http://www.canva.com). (Cash only.)

Because of the generosity of our elected officials, they can share their amazing world class experience. If you would like more information about our doings, check out the links at [www.famfolkfound.org](http://www.famfolkfound.org) and [www.facebook.com/familyfolklorefoundation](http://www.facebook.com/familyfolklorefoundation).



**NEISES**  
Lawn Care & Landscaping

**661-8354**

- Lawn Maintenance
- Snow & Ice Management
- Complete Landscape Services

**CALL TODAY FOR A FREE ESTIMATE**



**EATON PAINTING**  
219.306.6648

- Interior / Exterior Painting
- Residential / Commercial
- Free Estimates
- 3rd Generation of Service
- Licensed & Insured
- Serving Winfield & LOFS!

Call Brian at  
**219-306-6648!**

## General Classifieds

Submit your general classified ad or real estate classified ad online at [www.winfieldamerican.com](http://www.winfieldamerican.com).

### Fire Force Volunteers

Lakes of the Four Seasons Volunteer Fire Force, which serves LOFS, Winfield, Winfield Township, and the WPTFP district, is always in need of more dedicated volunteers to join our ranks. Want to help your community by giving back through service? Call 219-662-7576 or e-mail to [chief@lofsfire.com](mailto:chief@lofsfire.com).

## COUPONS



## COUPONS



## COUPONS



### It's Hip to Clip

Place your coupon in this section online!  
**[www.winfieldamerican.com](http://www.winfieldamerican.com)**

Or call our office at  
219-662-8888

Winfield American





### \$3 OFF

any Medium Pizza!

### \$4 OFF

any Large Pizza!

### \$5 OFF

any Family Pizza!

## STEPHANO'S PIZZA

10703 Randolph Street • Winfield  
**219-663-6656**

Limit one (1) coupon per visit.  
Must present coupon.  
Not valid with any other offer.  
Expires 5/2/24

Winfield American



↓

## PLACE YOUR BUSINESS CARD AD HERE

↓

## DON'S FOUNDATION REPAIR

**FREE ESTIMATES!**

Buckled Walls Repaired or Replaced • Basement/Foundations Built Under Existing Homes • Floor Leveling/House Raising or Leveling • Rotted Joist and Beam Repair • Sill Plate, Face Plate, & Joists • Egress Window Installation

35+ Years of Reliable Service & Experience  
Licensed/Bonded/Insured

**219.956.3355**  
[www.donsfoundationrepair.com](http://www.donsfoundationrepair.com)





**JEFFREY A JANOWSKI**  
FINE JEWELER  
219.663.5108  
1170 E Summit St.  
Crown Point, IN 46307

**facebook. Like Us!**

Fine Custom Made Jewelry • Diamonds & Precious Gems  
Remounting • Purchasing Gold & Precious Metals

**WWW.BELUSHJEWELERS.COM**

## Place your classified ads at

**[www.winfieldamerican.com](http://www.winfieldamerican.com)**



**Clemons' Tree Experts**

- Tree & Stump Removal
- Trimming & Pruning
- Lot & Land Clearing
- Storm Damage Removal
- Firewood
- Over 30 Years Experience

Residential & Commercial  
**219-663-3306**  
Free Estimates \* 24-Hour Emergency Service

Licensed \* Bonded \* Insured

## WE BUY GOLD

Serving Northwest Indiana for 50 Years  
Always buying Coin Collections, Stamp Collections, Old Gold & Silver

**Knight Coin & Jewelry**  
237 Main St. • Hobart, IN  
**219-942-4341**

On the web: [www.knightcoin.com](http://www.knightcoin.com)

## Your Business Card Here

**219-662-8888**



Fishing and hunting licenses can be purchased and printed at [www.INHuntFish.com](http://www.INHuntFish.com). They can also be purchased at retailers, county clerk offices, and most DNR properties throughout the state, as well as at the Boat, Sport and Travel Show.

For more information about career opportunities with Community Healthcare System, visit [www.COMHS.org/careers](http://www.COMHS.org/careers).

ment, and helping businesses launch, grow and locate in the state. Governed by a 14-member board chaired by Governor Eric J. Holcomb, the IEDC manages many initiatives, including performance-based tax credits, workforce training grants, innovation and entrepreneurship resources, public infrastructure assistance, and talent attraction and retention efforts. For more information about the IEDC, visit [www.iedc.in.gov](http://www.iedc.in.gov).

